

RCA ref 10408-729/0

10 October 2020

Dungog Shire Council
PO Box 95
DUNGOG NSW 2420

Attention: Damien Reeves

[Geotechnical Engineering](#)

[Engineering Geology](#)

[Environmental Engineering](#)

[Hydrogeology](#)

[Construction Materials Testing](#)

[Environmental Monitoring](#)

[Sound & Vibration](#)

[Occupational Hygiene](#)

**WATER QUALITY MONITORING
QUARTER 33 – SEPTEMBER 2020
DUNGOG LANDFILL SITE**

1 INTRODUCTION

RCA Australia (RCA) was engaged to undertake environmental monitoring for the Dungog Shire Council Waste Facility on the 26 June 2020. The monitoring made up the third quarterly round (Q4) of monitoring required to be undertaken for the 2019 – 2020 sampling period. Sampling works for the Q3 monitoring round was undertaken as per the monitoring requirements outlined in the Dungog Shire Council Waste Facility Environmental Protection Licence EPL 5894 (EPL 5894).

2 SCOPE OF WORKS

The objective of this project was to undertake environmental monitoring at the Dungog and Martins Creek Landfill sites in accordance with the EPL 5894 requirements.

The scope of works for this project included:

- Preparation of safety and environmental documents;
- Quarterly sampling of the Dungog Leachate Dam and the Martins Creek Leachate Dam as well as the annual sampling of the Dungog groundwater monitoring well.
- Analysis of the three collected samples in accordance with the site's EPL 5894 compliance requirements; and
- Compilation of a report summarizing the results from the Q3 2020 sampling event.

3 SITE GUIDELINES AND ASSESSMENT CRITERIA

EPL 5894 requires leachate monitoring to be conducted on a quarterly basis and groundwater sampling on an annual basis in order to assess the water quality present at the site. The analysis suite, as specified in EPL 5894, are for monitoring purposes only and no guideline criteria is specified.

For comparative purposes, this report has used additional water quality guidelines as assessment indicators. Guidelines used include the Australian Water Quality Guidelines for Fresh and Marine Waters (ANZECC, 2000) and the Australian Drinking Water Guidelines, hereafter referred to as ADWG, (NHRMC, 2011 updated 2018). It should be noted that assessment criteria used in this report, provided in **Table 1**, have not been altered from those presented by the previous sampling contractor for continuity of historical data.

Table 1 Assessment Criteria

Parameter	Units	PQL	Australian Drinking Water Quality Guidelines (ADWG) (mg/L) ^a	ANZECC 95% Trigger Values for Fresh Water (mg/L) ^b
Hydroxide Alkalinity as CaCO ₃	mg/L	1	-	-
Carbonate Alkalinity as CaCO ₃	mg/L	1	-	-
Bicarbonate Alkalinity as CaCO ₃	mg/L	1	-	-
Total Alkalinity as CaCO ₃	mg/L	1	-	-
Ammonia as N	mg/L	0.01	0.5 ^c	0.9 ^f
Calcium	mg/L	1	-	-
Chloride	mg/L	1	250 ^c	-
Thermotolerant Faecal Coliforms	cfu/100mL	-	0	1000 ^g
Electrical Conductivity	µS/cm	1	125 - 2200	30 - 350 ^d
Magnesium	mg/L	1	-	-
Nitrate as N	mg/L	0.01	50	0.7
Potassium	mg/L	1	-	-
pH	pH units	-	6.5 - 8.5	6.5 - 8
Sodium	mg/L	1	180 ^c	-
Sulfate	mg/L	1	250 ^c	-
Total Dissolved Solids	mg/L	5	600 ^c	-
Total Organic Carbon	mg/L	1	-	-
Total Suspended Solids	mg/L	5	-	-

"-" indicates no criterion available

PQL = Practical Quantitation Limit.

a From Australian Drinking Water Guidelines Version 3.5 (NHRMC/ NRMCC, update 2018).

b Primarily from ANZECC (2000) Australian and New Zealand Guidelines for Fresh and Marine Water Quality- Chapter 3 Aquatic Ecosystems (Trigger levels for fresh water slightly - moderately disturbed system)c Guideline based on Aesthetic Criteria.

d Default trigger values for slightly disturbed upland river ecosystems in South-East Australia.

e Based on a value which may result in lime scaling. Alkalinity is an indicator for landfill leachate.

f Trigger value for pH 8.0, other values are listed in ANZECC section 8.3.7.2.

g Trigger value for secondary human contact, see ANZECC Section 5.2.3.

4 FIELDWORK

An environmental technician trained and experienced in water sampling undertook the fieldwork on the 24 September 2020. Sampling was conducted in accordance with Australian Standard AS5667.1998 Water Quality Sampling. The scope of work included:

- Collection of one water sample from the Dungog Leachate Dam
- The collection of one groundwater sample from the Dungog Landfill site.
- The samples were tested for the analytes stipulated in the site's EPL which are

presented in **Table 2**

- All samples were preserved as recommended by the analytical laboratory and stored in a chilled esky for preservation purposes. Samples were sent to the laboratory within 24 hours of sampling. All samples were sent under Chain of Custody (COC) documentation detailing the sample identification, required analysis, the name of the sampler and date released from custody. The laboratories acknowledged the receipt of samples by signature and date and returned the COC with a sample receipt notice indicating the condition of the samples received upon receipt.

The sampling field sheet is attached in **Appendix B**.

5 QUALITY CONTROL

The collection of the water sample was undertaken in compliance with RCA methodology. Surface water sample collection methods comprised of direct sampling into the bottle from surface water body.

These surface water collection methods were chosen for the site as recommended by the Australian Standard 5667.1:1998 Water Quality Sampling.

The analytical procedures used by RCA Laboratories are based on established internationally recognised procedures such as APHA and Australian Standards. RCA Laboratories - Environmental conduct the NATA accredited analysis of the pH, EC, TDS, TSS and faecal coliforms.

When an external testing laboratory is used to obtain the analysis of samples that become a part of this report, then the details of that laboratory's NATA accreditation and their official report will be attached as an appendix.

Quality assurance and control analysis was undertaken as part of the project scope of works. Quality results from the internal RCA Laboratories - Environmental are included within the laboratory report provided in **Appendix C**, whilst external laboratory quality control documents are presented in **Appendix E**

6 RESULTS

The water quality assessment criteria presented are for comparison purposes only. The Site's EPL requirements do not specify any monitoring criteria to assess the concentration ranges of analytes. Water quality results compared against limit concentrations are presented in **Table 2**.

Table 2 *Water Quality Results versus Assessment Criteria*

Parameter	Units	Leachate Storage Pond	Dungog Groundwater	Australian Drinking Water Quality Guidelines (mg/L) ^a	ANZECC 95% Trigger Values for Fresh Water (mg/L) ^b
Sample Number		092010408001	092010408002		
Sample Date		24/09/2020	24/09/2020		
Sample Time		9.00	8.50		
Field Technician		SK	SK		
Hydroxide Alkalinity as CaCO ₃	mg/L	<1		-	-
Carbonate Alkalinity as CaCO ₃	mg/L	<1		-	-
Bicarbonate Alkalinity as CaCO ₃	mg/L	720		-	-
Total Alkalinity as CaCO ₃	mg/L	720		200 ^e	-
Ammonia as N	mg/L	0.02		0.5 ^c	0.9 ^f
Calcium	mg/L	124		-	-
Chloride	mg/L	358		250 ^c	-
Thermotolerant Faecal Coliforms	cfu/100mL	24		0	1000 ^g
Electrical Conductivity	µS/cm	2490		125 - 2200	30 - 350 ^d
Magnesium	mg/L	69		-	-
Nitrate as N	mg/L	<0.01	<0.01	50	0.7
Potassium	mg/L	19	1	-	-
pH (pH units)	pH units	7.35	7.64	6.5 - 8.5	6.5 - 8.0
Sodium	mg/L	253		180 ^c	-
Sulfate	mg/L	80		500, 250 ^c	-
Total Dissolved Solids	mg/L	1271		600 ^c	-
Total Organic Carbon	mg/L	23		-	-
Total Suspended Solids	mg/L	12		-	-

Notes:

Result in *italics* indicates that the concentration is exceeding one of the assessment guidelines. Refer to the summary for further details.

"-" indicates no criterion available.

PQL = Practical Quantitation Limit.

a From Australian Drinking Water Guidelines Version 3.5 (NHRMC/NRMMC, update 2019).

b Primarily from ANZECC (2000) Australian and New Zealand Guidelines for Fresh and Marine Water Quality - Chapter 3 Aquatic Ecosystems (Trigger levels for fresh water slightly - moderately disturbed system).


c Guideline based on Aesthetic Criteria.

d Default trigger values for slightly disturbed upland river ecosystems in South-East Australia.

e Based on a value which may result in lime scaling. Alkalinity is an indicator for landfill leachate.

f Trigger value for pH 8.0, other values are listed in ANZECC section 8.3.7.2.

g Trigger value for secondary human contact, see ANZECC Section 5.2.3.

 Analysis not required

Analytical laboratory NATA reports and quality assurance documentation are presented in **Appendices C, D and E**.

During the Q4 monitoring round, there were five results in excess of the assessment criteria as summarized below:

- Electrical conductivity was above the upper criterion indicated in the ANZECC 95% protection level for fresh water for the Dungog leachate Dam sample. Leachate sample was above the upper criterion outlined in the ADWG.
- Total dissolved solids concentration leachate dam sample were in excess of the ADWG aesthetic criterion. No health effects have been associated with TDS concentrations, and the aesthetic guideline is based upon the taste factor
- The concentration of chloride was in excess of the ADWG in the Dungog Leachate Dam sample.
- The sodium concentration was greater than the ADWG aesthetic criterion in the Dungog Leachate Dam.
- Thermotolerant coliforms were below the limits indicated in the ANZECC 95% protection level for fresh water however, were above the ADWG.
- Ammonia was below the upper criterion indicated in the ANZECC 95% protection level for fresh water and ADWG for the Dungog leachate Dam sample.
- Total Alkalinity as CaCO₃ was above the upper criterion indicated in the ADWG for the Dungog leachate Dam sample.
- Sulphate was below the criterion indicated in the ADWG for the Dungog leachate Dam sample.
- Nitrate was below the criterion indicated in the ANZECC 95% protection level for fresh water and ADWG for the Dungog leachate Dam sample.

7 LIMITATIONS

This report has been prepared for Dungog Shire Council in accordance with an agreement with RCA dated 2 December 2013. The services performed by RCA have been conducted in a manner consistent with that generally exercised by members of its profession and consulting practice.

This report has been prepared for the use of Dungog Shire Council. The report for September does not contain sufficient information for purposes of other users or for parties other than Dungog Shire Council. This report shall only be presented in full and may not be used to support objectives other than those stated in the report without written permission from RCA.

Environmental conditions including contaminant concentrations can change in a limited period of time. This should be considered if the report is used following a significant period of time after the date of issue.

The information in this report is considered accurate at the date of issue. Please contact the undersigned if you have any queries on the above.

Yours faithfully
RCA AUSTRALIA



Laura Schofield
Environmental Laboratory Manager
RCA Australia



Neena Tewari
Senior Environmental Microbiologist
RCA Australia

REFERENCES

ANZECC (2000). Australian and New Zealand Guidelines for Fresh and Marine Water Quality.

NHMRC/NRMMC (2018) National Water Quality Management Strategy; Australian Drinking Water Guidelines version 3.5 (National Health and Medical Research Council/National Resource Management Ministerial Council).

Appendix A

Water Sample Locations



Dungog Shire Council
Waste Management Facility

- Dungog Leachate Dam (Surface Water)
- Dungog Leachate Dam (Groundwater)

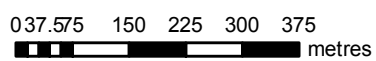
DUNGOG

Short Street

Clarence Town Road

Legend

- Quarterly surface water sample location
- Annual groundwater sample location



**DUNGOG SHIRE COUNCIL
WASTE MANAGEMENT FACILITY
QUARTERLY AND ANNUAL
EPL MONITORING LOCATION**

CLIENT		Dungog Shire Council		RCA Ref		10408-729/0	
DRAWN BY	LS	SCALE	1:10,000 (A3)	DRAWING	1	REV	0
APPROVED BY	NT	DATE	10/10/2020	OFFICE	NEWCASTLE		

Appendix B

Field Sheet

Surface and Tank Water Sampling Field Sheet

Client: Dungog shire council Job Number: 10408

Technician: SK Date Sampled: 24/9/20

Meter(s) Used: _____

Sample Number	Site ID	Time Sampled	Flow	Temp (°C)	pH	Other Analysis (Include Measurement Units)					
092010408001	Leachate dam	9:00	Nil	15°c							

Comments:

Ground Water Sampling Field Sheet

Client: Dungog Shire council Job Number: 10408

Technician: SK Date Sampled: 24/9/20

Meter(s) Used: _____ SK 24/9/20

Sample Number	Bore ID	Time Sampled	Depth to Aquifer (m)	Pipe Height (m)	Depth to Aquifer from Surface (m)	Temp (°C)	pH	Other Analysis (Include Measurement Units)			
092010408002	DGW	8:50	4.45	0.6m 2.1 N/A	4.75 3.85	18°C					

Comments: _____

21.45 deep

Appendix C

Internal Laboratory Reports

0

Dungog Shire Council
PO Box 95
DUNGOG NSW 2420

Attention: Mr Damien Reeves

Project: RCA ref 10408-728/WATER/0
Date: 10/10/2020
Client reference: Dungog Landfill Leachate Dam
Quarterly Sample
Received date: 24/09/2020
Client order number: Not Supplied
Number of samples: 2
Testing commenced: 24/09/2020

CERTIFICATE OF ANALYSIS

1 ANALYTICAL TEST METHODS

ANALYSIS	METHOD	UNITS	ANALYSING LABORATORY	NATA ANALYSIS/ NON NATA
pH	ENV-LAB006*	pH	RCA Laboratories - Environmental	NATA
Conductivity	ENV-LAB010*	µS/cm	RCA Laboratories - Environmental	NATA
Total Suspended Solids	ENV-LAB009*	mg/L	RCA Laboratories - Environmental	NATA
Total Dissolved Solids	ENV-LAB020*	mg/L	RCA Laboratories - Environmental	NATA

* The analytical procedures used by RCA Laboratories - Environmental are based on established internationally recognised procedures such as APHA and Australian Standards

2 RESULTS

ANALYSIS	UNITS	Dungog Leachate Dam	Dungog Groundwater
Water			
Sample Number	-	092010408001	092010408002
Date Sampled	-	24/09/2020	24/09/2020
Sampled By		SK	SK
pH Value	pH unit	7.35	7.64
Conductivity	µS/cm	2490	-
Total Suspended Solids	mg/L	12	-
Total Dissolved Solids	mg/L	1271	-

Water

NATA Scope of Accreditation covers the sampling of surface and ground waters by RCA.

Analysis of samples is on an as received basis.

3 QUALITY CONTROL RESULTS

Water Quality Control Sample Results

DATE	ANALYSIS	METHOD	UNITS	QUALITY CONTROL STANDARD VALUE	QUALITY CONTROL ACCEPTANCE CRITERIA	QUALITY CONTROL STANDARD RESULT
24/09/2020	pH	ENV-LAB006	pH	7.00	6.95 - 7.05	7.00
24/09/2020	Conductivity	ENV-LAB010*	µS/cm	1413	1385 - 1441	1410
29/09/2020	Total Suspended Solids	ENV-LAB009	mg/L	75	67.5 – 82.5	72
29/09/2020	Total Dissolved Solids	ENV-LAB020	mg/L	35	31.5 – 38.5	33

Water Duplicate Analysis Results

SAMPLE NUMBER	DATE	ANALYSIS	METHOD	UNITS	LOR	SAMPLE RESULT	SAMPLE DUPLICATE RESULT
092010408001	24/09/2020	pH	ENV-LAB006	pH	-	7.35	7.36
092010408001	24/09/2020	Conductivity	ENV-LAB010	µS/cm	1	2490	2470
092013215003 BATCH	29/09/2020	Total Suspended Solids	ENV-LAB009	mg/L	5	44	45
092013215003 BATCH	29/09/2020	Total Dissolved Solids	ENV-LAB020	mg/L	5	633	598

Please contact the undersigned if you have any queries.

Yours sincerely



Laura Schofield
Environmental Laboratory Manager
Robert Carr & Associates Pty Ltd Trading as
RCA Laboratories – Environmental
Approved Signatory



Neena Tewari
Senior Environmental Microbiologist
Robert Carr & Associates Pty Ltd Trading as
RCA Laboratories - Environmental

RCA Internal Quality Review

General

1. Laboratory QC results for Method Blanks, Duplicates and Laboratory Control Samples are included in this QC report where applicable. Additional QC data maybe available on request.
2. RCA QC Acceptance / Rejection Criteria are available on request.
3. Proficiency Trial results are available on request.
4. Actual PQLs are matrix dependant. Quoted PQLs may be raised where sample extracts are diluted due to interferences.
5. When individual results are qualified in the body of a report, refer to the qualifier descriptions that follow.
6. Samples were analysed on an 'as received' basis.
7. Sampled dates in this report are those listed on the COC or sample jars; if no sample dates are noted, the date the samples are received at the laboratory have been used.
8. All soil results are reported on a dry basis, unless otherwise stated. (ACID SULPHATE SOILS)
9. This report replaces any interim results previously issued.

Holding Times.

For samples received on the last day of holding time, notification of testing requirements should have been received at least 6 hours prior to sample receipt deadlines as stated on the Sample

Receipt Acknowledgment.

If the Laboratory did not receive the information in the required timeframe, and regardless of any other integrity issues, suitably qualified results may still be reported.

Holding times apply from the date of sampling, therefore compliance to these may be outside the laboratory's control.

**NOTE: pH duplicates are reported as a range NOT as RPD

QC - ACCEPTANCE CRITERIA

RPD Duplicates: Global RPD Duplicates Acceptance Criteria is 30% however the following acceptance guidelines are equally applicable:

Results <10 times the LOR: No Limit

Results between 10-20 times the LOR: RPD must lie between 0-50%

Results >20 times the LOR: RPD must lie between 0-30%

QC DATA GENERAL COMMENTS

1. Where a result is reported as a less than (<), higher than the nominated LOR, this is due to either matrix interference, extract dilution required due to interferences or contaminant levels within the sample, high moisture content or insufficient sample provided.
2. Duplicate data shown within this report that states the word "BATCH" is a Batch Duplicate from outside of your sample batch, but within the laboratory sample batch at a 1:10 ratio. The Parent and Duplicate data shown is not data from your samples.
3. Duplicate RPD's are calculated from raw analytical data thus it is possible to have two sets of data.

Glossary

UNITS

mg/kg: milligrams per Kilogram

ug/l: micrograms per litre ppm: Parts per million

ppb: Parts per billion %: Percentage

org/100ml: Organisms per 100 millilitres NTU: Units

MPN/100mL: Most Probable Number of organisms per 100 millilitres

mg/l: milligrams per Litre

TERMS

Dry Where moisture has been determined on a solid sample the result is expressed on a dry basis.

LOR Limit of Reporting.

RPD Relative Percent Difference between two Duplicate pieces of analysis can be obtained upon request.

QCS Quality Control Sample - reported as value recovery

Method Blank In the case of solid samples these are performed on laboratory certified clean sands.

In the case of water samples these are performed on de-ionised water.

Duplicate A second piece of analysis from the same sample and reported in the same units as the result to show comparison.

Batch Duplicate A second piece of analysis from a sample outside of the clients batch of samples but run within the laboratory batch of analysis.

USEPA United States Environment Protection Authority

APHA American Public Health Association

COC Chain of Custody

CP Client Parent - QC was performed on samples pertaining to this report

NCP Non-Client Parent - QC performed on samples not pertaining to this report, QC is representative of the sequence or batch that client samples were analysed within

< indicates less than

> Indicates greater than

ND Not Detected

Damien Reeves
Dungog Shire Council
PO Box 95
DUNGOG NSW 2420

Analytical Report

Project: RCA ref 10408-729/Micro/0
Sample Received: 24/09/2020

Number of Samples: 1
Report Date: 28/09/2020

<u>Results</u>		
		<u>Dungog Shire Council</u>
Client ID		Leachate Storage Pond
Date Sampled		24/09/2020
Time Sampled		9:00 AM
Laboratory ID	Units	092010408001
Method: Thermotolerant Coliforms MF (AS)(AS/NZS 4276.7 – 2007)	cfu/100mL	24

Tests Commenced on the Day of Receipt of Samples

The results stated in this report relate only to the sample(s) as Collected by the client and/or by RCA Laboratories – Sampling is not covered by NATA Scope of Accreditation and analysis on as received basis. Symbols Used:

- < Less Than
- > More Than
- ~ Estimate Number
- ND Not Detected
- cfu Colony Forming Units

Measurement of Uncertainty (MU) calculated for *Thermotolerant coliforms* method is ± 0.10 with a coverage factor 2 (95% confidence level of the accuracy)



Neena Tewari
Microbiologist
B.Sc; M.Sc; Ph.D Microbiology



Laura Schofield
Laboratory Manager

Appendix D

External Laboratory Reports

CERTIFICATE OF ANALYSIS

Work Order : **ES2033696**
Client : **ROBERT CARR & ASSOCIATES P/L**
Contact : MS LAURA SCHOFIELD
Address : PO BOX 175
 CARRINGTON NSW, AUSTRALIA 2294
Telephone : +61 02 49029200
Project : 10408 DUNGOG SHIRE COUNCIL
Order number : ----
C-O-C number : ----
Sampler : ----
Site : ----
Quote number : SYBQ/400/18
No. of samples received : 2
No. of samples analysed : 2

Page : 1 of 3
Laboratory : Environmental Division Sydney
Contact : Grace White
Address : 277-289 Woodpark Road Smithfield NSW Australia 2164
Telephone : +61 2 8784 8555
Date Samples Received : 24-Sep-2020 10:32
Date Analysis Commenced : 25-Sep-2020
Issue Date : 30-Sep-2020 10:13



Accreditation No. 825
 Accredited for compliance with
 ISO/IEC 17025 - Testing

This report supersedes any previous report(s) with this reference. Results apply to the sample(s) as submitted. This document shall not be reproduced, except in full.

This Certificate of Analysis contains the following information:

- General Comments
- Analytical Results

Additional information pertinent to this report will be found in the following separate attachments: Quality Control Report, QA/QC Compliance Assessment to assist with Quality Review and Sample Receipt Notification.

Signatories

This document has been electronically signed by the authorized signatories below. Electronic signing is carried out in compliance with procedures specified in 21 CFR Part 11.

<i>Signatories</i>	<i>Position</i>	<i>Accreditation Category</i>
Ankit Joshi	Inorganic Chemist	Sydney Inorganics, Smithfield, NSW
Ivan Taylor	Analyst	Sydney Inorganics, Smithfield, NSW



General Comments

The analytical procedures used by ALS have been developed from established internationally recognised procedures such as those published by the USEPA, APHA, AS and NEPM. In house developed procedures are fully validated and are often at the client request.

Where moisture determination has been performed, results are reported on a dry weight basis.

Where a reported less than (<) result is higher than the LOR, this may be due to primary sample extract/digestate dilution and/or insufficient sample for analysis.

Where the LOR of a reported result differs from standard LOR, this may be due to high moisture content, insufficient sample (reduced weight employed) or matrix interference.

When sampling time information is not provided by the client, sampling dates are shown without a time component. In these instances, the time component has been assumed by the laboratory for processing purposes.

Where a result is required to meet compliance limits the associated uncertainty must be considered. Refer to the ALS Contact for details.

Key : CAS Number = CAS registry number from database maintained by Chemical Abstracts Services. The Chemical Abstracts Service is a division of the American Chemical Society.
LOR = Limit of reporting
^ = This result is computed from individual analyte detections at or above the level of reporting
ø = ALS is not NATA accredited for these tests.
~ = Indicates an estimated value.

- Sodium Adsorption Ratio (where reported): Where results for Na, Ca or Mg are <LOR, a concentration at half the reported LOR is incorporated into the SAR calculation. This represents a conservative approach for Na relative to the assumption that <LOR = zero concentration and a conservative approach for Ca & Mg relative to the assumption that <LOR is equivalent to the LOR concentration.



Analytical Results

Sub-Matrix: WATER (Matrix: WATER)		Client sample ID			092010408001	092010408002	----	----	----
		Client sampling date / time			24-Sep-2020 00:00	24-Sep-2020 00:00	----	----	----
Compound	CAS Number	LOR	Unit	ES2033696-001	ES2033696-002	-----	-----	-----	
				Result	Result	----	----	----	
ED037P: Alkalinity by PC Titrator									
Hydroxide Alkalinity as CaCO3	DMO-210-001	1	mg/L	<1	----	----	----	----	----
Carbonate Alkalinity as CaCO3	3812-32-6	1	mg/L	<1	----	----	----	----	----
Bicarbonate Alkalinity as CaCO3	71-52-3	1	mg/L	720	----	----	----	----	----
Total Alkalinity as CaCO3	----	1	mg/L	720	----	----	----	----	----
ED041G: Sulfate (Turbidimetric) as SO4 2- by DA									
Sulfate as SO4 - Turbidimetric	14808-79-8	1	mg/L	80	----	----	----	----	----
ED045G: Chloride by Discrete Analyser									
Chloride	16887-00-6	1	mg/L	358	----	----	----	----	----
ED093F: Dissolved Major Cations									
Calcium	7440-70-2	1	mg/L	124	----	----	----	----	----
Magnesium	7439-95-4	1	mg/L	69	----	----	----	----	----
Sodium	7440-23-5	1	mg/L	253	----	----	----	----	----
Potassium	7440-09-7	1	mg/L	19	1	----	----	----	----
EK055G: Ammonia as N by Discrete Analyser									
Ammonia as N	7664-41-7	0.01	mg/L	0.02	0.04	----	----	----	----
EK057G: Nitrite as N by Discrete Analyser									
Nitrite as N	14797-65-0	0.01	mg/L	<0.01	<0.01	----	----	----	----
EK058G: Nitrate as N by Discrete Analyser									
Nitrate as N	14797-55-8	0.01	mg/L	<0.01	<0.01	----	----	----	----
EK059G: Nitrite plus Nitrate as N (NOx) by Discrete Analyser									
Nitrite + Nitrate as N	----	0.01	mg/L	<0.01	<0.01	----	----	----	----
EN055: Ionic Balance									
∅ Total Anions	----	0.01	meq/L	26.1	----	----	----	----	----
∅ Total Cations	----	0.01	meq/L	23.4	----	----	----	----	----
∅ Ionic Balance	----	0.01	%	5.64	----	----	----	----	----
EP005: Total Organic Carbon (TOC)									
Total Organic Carbon	----	1	mg/L	23	----	----	----	----	----



CHAIN OF CUSTODY

ALS Laboratory: please tick →

Sydney: 277 Woodpark Rd, Smithfield NSW 2176
 Ph: 02 8784 8555 E: samples.sydney@alsenviro.com
 Newcastle: 5 Rosegum Rd, Warabrook NSW 2304
 Ph: 02 4968 9433 E: samples.newcastle@alsenviro.com

Brisbane: 32 Strand St, Stafford QLD 4053
 Ph: 07 3243 7222 E: samples.brisbane@alsenviro.com
 Townsville: 14-15 Desma Ct, Bohle QLD 4818
 Ph: 07 4796 0600 E: townsville.environmental@alsenviro.com

Melbourne: 2-4 Westall Rd, Springvale VIC 3171
 Ph: 03 8549 9800 E: samples.melbourne@alsenviro.com
 Adelaide: 2-1 Burma Rd, Pooraka SA 5095
 Ph: 08 8359 0890 E: adelaide@alsenviro.com

Perth: 10 Hod Way, Malaga WA 6090
 Ph: 08 9209 7655 E: samples.perth@alsenviro.com
 Launceston: 27 Wellington St, Launceston TAS 7250
 Ph: 03 6331 2153 E: launceston@alsenviro.com

CLIENT: RCA		TURNAROUND REQUIREMENTS : <input type="checkbox"/> Standard TAT (List due date):				FOR LABORATORY USE ONLY (Circle)			
OFFICE: Carrington RCA Laboratories Env		(Standard TAT may be longer for some tests e.g., Ultra Trace Organics) <input type="checkbox"/> Non Standard or urgent TAT (List due date):				Custody Seal intact? Yes No N/A			
PROJECT: Dungog Shire Council		PROJECT NO.: 10408	ALS QUOTE NO.: SYBQ/265/18		COC SEQUENCE NUMBER (Circle)				
ORDER NUMBER:		PURCHASE ORDER NO.:	COUNTRY OF ORIGIN:		Free ice / frozen ice bricks present upon receipt? Yes No N/A				
PROJECT MANAGER: Laura Schofield		CONTACT PH:		COC: ① 2 3 4 5 6 7		Random Sample Temperature on Receipt: 16.0		Other comment:	
SAMPLER: <i>SWING</i>		SAMPLER MOBILE: 046705350		RELINQUISHED BY: SK		RECEIVED BY: MM 10.32am A		RECEIVED BY: HJ	
COC Emailed to ALS? (YES / NO)		EDD FORMAT (or default):		DATE/TIME: 10:30		DATE/TIME: 24/09/20		DATE/TIME: 7:30pm	
Email Reports to (will default to PM if no other addresses are listed): Results Address, lauras@rca.com.au, administrator@rca.com.au				DATE/TIME: 24/9/20		DATE/TIME: 24/9/20		DATE/TIME: 24/9/20	
Email Invoice to (will default to PM if no other addresses are listed): as above + administrator@rca.com.au				DATE/TIME: 24/9/20		DATE/TIME: 24/9/20		DATE/TIME: 24/9/20	

COMMENTS/SPECIAL HANDLING/STORAGE OR DISPOSAL:

ALS USE ONLY	SAMPLE DETAILS			CONTAINER INFORMATION	ANALYSIS REQUIRED including SUITES (NB. Suite Codes must be listed to attract suite price)								Additional Information	
	MATRIX: Solid(S) Water(W)	DATE / TIME	MATRIX		Where Metals are required, specify Total (unfiltered bottle required) or Dissolved (field filtered bottle required).									
LAB ID	SAMPLE ID	DATE / TIME	MATRIX	TYPE & PRESERVATIVE (refer to codes below)	TOTAL BOTTLES	NT-1 (major cations)	NT-2 (major anions)	Total Organic Carbon	NT-4	Ammonia as N	Potassium			
1	092010408001	24/09/2020	W		5	x	x	x	x	x				Dungog Leachate Dam (point 1)
2	092010408002	24/09/2020	W		3				x	x	x			Dungog Groundwater (point 2)
					TOTAL									

Environmental Division
 Sydney
 Work Order Reference
ES2033696

 Telephone : + 61-2-8784 8555

LAB OF ORIGIN:
NEWCASTLE
E-MAILED

Water Container Codes: P = Unpreserved Plastic; N = Nitric Preserved Plastic; ORC = Nitric Preserved ORC; SH = Sodium Hydroxide/Cd Preserved; S = Sodium Hydroxide Preserved Plastic; AG = Amber Glass Unpreserved; AP - Airfreight Unpreserved Plastic
 V = VOA Vial HCl Preserved; VB = VOA Vial Sodium Bisulphate Preserved; VS = VOA Vial Sulfuric Preserved; AV = Airfreight Unpreserved Vial SG = Sulfuric Preserved Amber Glass; H = HCl preserved Plastic; HS = HCl preserved Speciation bottle; SP = Sulfuric Preserved Plastic; F = Formaldehyde Preserved Glass;
 Z = Zinc Acetate Preserved Bottle; E = EDTA Preserved Bottles; ST = Sterile Bottle; ASS = Plastic Bag for Acid Sulphate Soils; B = Unpreserved Bag.

Appendix E

External Quality Control Documents

QUALITY CONTROL REPORT

Work Order	: ES2033696	Page	: 1 of 5
Client	: ROBERT CARR & ASSOCIATES P/L	Laboratory	: Environmental Division Sydney
Contact	: MS LAURA SCHOFIELD	Contact	: Grace White
Address	: PO BOX 175 CARRINGTON NSW, AUSTRALIA 2294	Address	: 277-289 Woodpark Road Smithfield NSW Australia 2164
Telephone	: +61 02 49029200	Telephone	: +61 2 8784 8555
Project	: 10408 DUNGOG SHIRE COUNCIL	Date Samples Received	: 24-Sep-2020
Order number	: ----	Date Analysis Commenced	: 25-Sep-2020
C-O-C number	: ----	Issue Date	: 30-Sep-2020
Sampler	: ----		
Site	: ----		
Quote number	: SYBQ/400/18		
No. of samples received	: 2		
No. of samples analysed	: 2		



This report supersedes any previous report(s) with this reference. Results apply to the sample(s) as submitted. This document shall not be reproduced, except in full.

This Quality Control Report contains the following information:

- Laboratory Duplicate (DUP) Report; Relative Percentage Difference (RPD) and Acceptance Limits
- Method Blank (MB) and Laboratory Control Spike (LCS) Report; Recovery and Acceptance Limits
- Matrix Spike (MS) Report; Recovery and Acceptance Limits

Signatories

This document has been electronically signed by the authorized signatories below. Electronic signing is carried out in compliance with procedures specified in 21 CFR Part 11.

Signatories	Position	Accreditation Category
Ankit Joshi	Inorganic Chemist	Sydney Inorganics, Smithfield, NSW
Ivan Taylor	Analyst	Sydney Inorganics, Smithfield, NSW



General Comments

The analytical procedures used by ALS have been developed from established internationally recognised procedures such as those published by the USEPA, APHA, AS and NEPM. In house developed procedures are fully validated and are often at the client request.

Where moisture determination has been performed, results are reported on a dry weight basis.

Where a reported less than (<) result is higher than the LOR, this may be due to primary sample extract/digestate dilution and/or insufficient sample for analysis. Where the LOR of a reported result differs from standard LOR, this may be due to high

Key :
 Anonymous = Refers to samples which are not specifically part of this work order but formed part of the QC process lot
 CAS Number = CAS registry number from database maintained by Chemical Abstracts Services. The Chemical Abstracts Service is a division of the American Chemical Society.
 LOR = Limit of reporting
 RPD = Relative Percentage Difference
 # = Indicates failed QC

Laboratory Duplicate (DUP) Report

The quality control term Laboratory Duplicate refers to a randomly selected intralaboratory split. Laboratory duplicates provide information regarding method precision and sample heterogeneity. The permitted ranges for the Relative Percent Deviation (RPD) of Laboratory Duplicates are specified in ALS Method QWI-EN/38 and are dependent on the magnitude of results in comparison to the level of reporting: Result < 10 times LOR: No Limit; Result between 10 and 20 times LOR: 0% - 50%; Result > 20 times LOR: 0% - 20%.

Sub-Matrix: **WATER**

				Laboratory Duplicate (DUP) Report					
Laboratory sample ID	Client sample ID	Method: Compound	CAS Number	LOR	Unit	Original Result	Duplicate Result	RPD (%)	Recovery Limits (%)
ED037P: Alkalinity by PC Titrator (QC Lot: 3278121)									
ES2033456-005	Anonymous	ED037-P: Hydroxide Alkalinity as CaCO3	DMO-210-001	1	mg/L	<1	<1	0.00	No Limit
		ED037-P: Carbonate Alkalinity as CaCO3	3812-32-6	1	mg/L	<1	<1	0.00	No Limit
		ED037-P: Bicarbonate Alkalinity as CaCO3	71-52-3	1	mg/L	433	436	0.849	0% - 20%
		ED037-P: Total Alkalinity as CaCO3	----	1	mg/L	433	436	0.849	0% - 20%
ES2033476-004	Anonymous	ED037-P: Hydroxide Alkalinity as CaCO3	DMO-210-001	1	mg/L	<1	<1	0.00	No Limit
		ED037-P: Carbonate Alkalinity as CaCO3	3812-32-6	1	mg/L	<1	<1	0.00	No Limit
		ED037-P: Bicarbonate Alkalinity as CaCO3	71-52-3	1	mg/L	163	158	3.26	0% - 20%
		ED037-P: Total Alkalinity as CaCO3	----	1	mg/L	163	158	3.26	0% - 20%
ED041G: Sulfate (Turbidimetric) as SO4 2- by DA (QC Lot: 3276964)									
EW2004322-001	Anonymous	ED041G: Sulfate as SO4 - Turbidimetric	14808-79-8	1	mg/L	<1	8	154	No Limit
ES2033681-001	Anonymous	ED041G: Sulfate as SO4 - Turbidimetric	14808-79-8	1	mg/L	77	74	3.87	0% - 20%
ED045G: Chloride by Discrete Analyser (QC Lot: 3276967)									
ME2001391-013	Anonymous	ED045G: Chloride	16887-00-6	1	mg/L	582	557	4.38	0% - 20%
ES2033681-001	Anonymous	ED045G: Chloride	16887-00-6	1	mg/L	232	229	1.49	0% - 20%
ED093F: Dissolved Major Cations (QC Lot: 3276343)									
ES2033696-001	092010408001	ED093F: Calcium	7440-70-2	1	mg/L	124	125	1.29	0% - 20%
		ED093F: Magnesium	7439-95-4	1	mg/L	69	68	2.15	0% - 20%
		ED093F: Sodium	7440-23-5	1	mg/L	253	254	0.00	0% - 20%
		ED093F: Potassium	7440-09-7	1	mg/L	19	19	0.00	0% - 50%
ES2033736-002	Anonymous	ED093F: Calcium	7440-70-2	1	mg/L	77	73	4.70	0% - 20%
		ED093F: Magnesium	7439-95-4	1	mg/L	26	25	4.48	0% - 20%
		ED093F: Sodium	7440-23-5	1	mg/L	162	156	3.52	0% - 20%
		ED093F: Potassium	7440-09-7	1	mg/L	2	2	0.00	No Limit
EK055G: Ammonia as N by Discrete Analyser (QC Lot: 3278878)									

Page : 3 of 5
 Work Order : ES2033696
 Client : ROBERT CARR & ASSOCIATES P/L
 Project : 10408 DUNGOG SHIRE COUNCIL



Sub-Matrix: WATER				Laboratory Duplicate (DUP) Report					
Laboratory sample ID	Client sample ID	Method: Compound	CAS Number	LOR	Unit	Original Result	Duplicate Result	RPD (%)	Recovery Limits (%)
EK055G: Ammonia as N by Discrete Analyser (QC Lot: 3278878) - continued									
ES2033584-001	Anonymous	EK055G: Ammonia as N	7664-41-7	0.01	mg/L	<0.01	<0.01	0.00	No Limit
ES2033893-003	Anonymous	EK055G: Ammonia as N	7664-41-7	0.01	mg/L	<0.01	0.07	149	No Limit
EK057G: Nitrite as N by Discrete Analyser (QC Lot: 3276966)									
ES2033681-001	Anonymous	EK057G: Nitrite as N	14797-65-0	0.01	mg/L	0.09	0.09	0.00	No Limit
EK059G: Nitrite plus Nitrate as N (NOx) by Discrete Analyser (QC Lot: 3278879)									
ES2033584-001	Anonymous	EK059G: Nitrite + Nitrate as N	----	0.01	mg/L	<0.01	<0.01	0.00	No Limit
ES2033893-003	Anonymous	EK059G: Nitrite + Nitrate as N	----	0.01	mg/L	<0.01	<0.01	0.00	No Limit
EP005: Total Organic Carbon (TOC) (QC Lot: 3276183)									
ES2033585-015	Anonymous	EP005: Total Organic Carbon	----	1	mg/L	<1	2	70.0	No Limit



Method Blank (MB) and Laboratory Control Spike (LCS) Report

The quality control term Method / Laboratory Blank refers to an analyte free matrix to which all reagents are added in the same volumes or proportions as used in standard sample preparation. The purpose of this QC parameter is to monitor potential laboratory contamination. The quality control term Laboratory Control Spike (LCS) refers to a certified reference material, or a known interference free matrix spiked with target analytes. The purpose of this QC parameter is to monitor method precision and accuracy independent of sample matrix. Dynamic Recovery Limits are based on statistical evaluation of processed LCS.

Sub-Matrix: **WATER**

				Method Blank (MB) Report	Laboratory Control Spike (LCS) Report			
Method: Compound	CAS Number	LOR	Unit	Result	Spike Concentration	Spike Recovery (%) LCS	Recovery Limits (%) Low High	
ED037P: Alkalinity by PC Titrator (QCLot: 3278121)								
ED037-P: Total Alkalinity as CaCO3	----	----	mg/L	----	200 mg/L	102	81.0	111
				----	50 mg/L	126	70.0	130
ED041G: Sulfate (Turbidimetric) as SO4 2- by DA (QCLot: 3276964)								
ED041G: Sulfate as SO4 - Turbidimetric	14808-79-8	1	mg/L	<1	25 mg/L	102	82.0	122
				<1	500 mg/L	91.8	82.0	122
ED045G: Chloride by Discrete Analyser (QCLot: 3276967)								
ED045G: Chloride	16887-00-6	1	mg/L	<1	10 mg/L	102	80.9	127
				<1	1000 mg/L	109	80.9	127
ED093F: Dissolved Major Cations (QCLot: 3276343)								
ED093F: Calcium	7440-70-2	1	mg/L	<1	50 mg/L	107	80.0	114
ED093F: Magnesium	7439-95-4	1	mg/L	<1	50 mg/L	103	90.0	116
ED093F: Sodium	7440-23-5	1	mg/L	<1	50 mg/L	106	82.0	120
ED093F: Potassium	7440-09-7	1	mg/L	<1	50 mg/L	103	85.0	113
EK055G: Ammonia as N by Discrete Analyser (QCLot: 3278878)								
EK055G: Ammonia as N	7664-41-7	0.01	mg/L	<0.01	1 mg/L	103	90.0	114
EK057G: Nitrite as N by Discrete Analyser (QCLot: 3276966)								
EK057G: Nitrite as N	14797-65-0	0.01	mg/L	<0.01	0.5 mg/L	95.6	82.0	114
EK059G: Nitrite plus Nitrate as N (NOx) by Discrete Analyser (QCLot: 3278879)								
EK059G: Nitrite + Nitrate as N	----	0.01	mg/L	<0.01	0.5 mg/L	100	91.0	113
EP005: Total Organic Carbon (TOC) (QCLot: 3276183)								
EP005: Total Organic Carbon	----	1	mg/L	<1	10 mg/L	110	72.0	120

Matrix Spike (MS) Report

The quality control term Matrix Spike (MS) refers to an intralaboratory split sample spiked with a representative set of target analytes. The purpose of this QC parameter is to monitor potential matrix effects on analyte recoveries. Static Recovery Limits as per laboratory Data Quality Objectives (DQOs). Ideal recovery ranges stated may be waived in the event of sample matrix interference.

Sub-Matrix: **WATER**

				Matrix Spike (MS) Report			
Laboratory sample ID	Client sample ID	Method: Compound	CAS Number	Spike Concentration	Spike Recovery (%) MS	Recovery Limits (%) Low High	
ED041G: Sulfate (Turbidimetric) as SO4 2- by DA (QCLot: 3276964)							
ES2033681-001	Anonymous	ED041G: Sulfate as SO4 - Turbidimetric	14808-79-8	10 mg/L	# Not Determined	70.0	130
ED045G: Chloride by Discrete Analyser (QCLot: 3276967)							



Sub-Matrix: **WATER**

				<i>Matrix Spike (MS) Report</i>			
				<i>Spike</i>	<i>SpikeRecovery(%)</i>	<i>Recovery Limits (%)</i>	
<i>Laboratory sample ID</i>	<i>Client sample ID</i>	<i>Method: Compound</i>	<i>CAS Number</i>	<i>Concentration</i>	<i>MS</i>	<i>Low</i>	<i>High</i>
ED045G: Chloride by Discrete Analyser (QCLot: 3276967) - continued							
ES2033681-001	Anonymous	ED045G: Chloride	16887-00-6	50 mg/L	# Not Determined	70.0	130
EK055G: Ammonia as N by Discrete Analyser (QCLot: 3278878)							
ES2033584-001	Anonymous	EK055G: Ammonia as N	7664-41-7	1 mg/L	104	70.0	130
EK057G: Nitrite as N by Discrete Analyser (QCLot: 3276966)							
ES2033681-001	Anonymous	EK057G: Nitrite as N	14797-65-0	0.5 mg/L	100	70.0	130
EK059G: Nitrite plus Nitrate as N (NOx) by Discrete Analyser (QCLot: 3278879)							
ES2033584-001	Anonymous	EK059G: Nitrite + Nitrate as N	----	0.5 mg/L	94.8	70.0	130
EP005: Total Organic Carbon (TOC) (QCLot: 3276183)							
ES2033595-002	Anonymous	EP005: Total Organic Carbon	----	100 mg/L	104	70.0	130

QA/QC Compliance Assessment to assist with Quality Review

Work Order	: ES2033696	Page	: 1 of 5
Client	: ROBERT CARR & ASSOCIATES P/L	Laboratory	: Environmental Division Sydney
Contact	: MS LAURA SCHOFIELD	Telephone	: +61 2 8784 8555
Project	: 10408 DUNGOG SHIRE COUNCIL	Date Samples Received	: 24-Sep-2020
Site	: ----	Issue Date	: 30-Sep-2020
Sampler	: ----	No. of samples received	: 2
Order number	: ----	No. of samples analysed	: 2

This report is automatically generated by the ALS LIMS through interpretation of the ALS Quality Control Report and several Quality Assurance parameters measured by ALS. This automated reporting highlights any non-conformances, facilitates faster and more accurate data validation and is designed to assist internal expert and external Auditor review. Many components of this report contribute to the overall DQO assessment and reporting for guideline compliance.

Brief method summaries and references are also provided to assist in traceability.

Summary of Outliers

Outliers : Quality Control Samples

This report highlights outliers flagged in the Quality Control (QC) Report.

- **NO Method Blank value outliers occur.**
- **NO Duplicate outliers occur.**
- **NO Laboratory Control outliers occur.**
- **Matrix Spike outliers exist - please see following pages for full details.**
- **For all regular sample matrices, NO surrogate recovery outliers occur.**

Outliers : Analysis Holding Time Compliance

- **NO Analysis Holding Time Outliers exist.**

Outliers : Frequency of Quality Control Samples

- **NO Quality Control Sample Frequency Outliers exist.**



Outliers : Quality Control Samples

Duplicates, Method Blanks, Laboratory Control Samples and Matrix Spikes

Matrix: **WATER**

Compound Group Name	Laboratory Sample ID	Client Sample ID	Analyte	CAS Number	Data	Limits	Comment
Matrix Spike (MS) Recoveries							
ED041G: Sulfate (Turbidimetric) as SO4 2- by DA	ES2033681--001	Anonymous	Sulfate as SO4 - Turbidimetric	14808-79-8	Not Determined	----	MS recovery not determined, background level greater than or equal to 4x spike level.
ED045G: Chloride by Discrete Analyser	ES2033681--001	Anonymous	Chloride	16887-00-6	Not Determined	----	MS recovery not determined, background level greater than or equal to 4x spike level.

Analysis Holding Time Compliance

If samples are identified below as having been analysed or extracted outside of recommended holding times, this should be taken into consideration when interpreting results.

This report summarizes extraction / preparation and analysis times and compares each with ALS recommended holding times (referencing USEPA SW 846, APHA, AS and NEPM) based on the sample container provided. Dates reported represent first date of extraction or analysis and preclude subsequent dilutions and reruns. A listing of breaches (if any) is provided herein.

Holding time for leachate methods (e.g. TCLP) vary according to the analytes reported. Assessment compares the leach date with the shortest analyte holding time for the equivalent soil method. These are: organics 14 days, mercury 28 days & other metals 180 days. A recorded breach does not guarantee a breach for all non-volatile parameters.

Holding times for VOC in soils vary according to analytes of interest. Vinyl Chloride and Styrene holding time is 7 days; others 14 days. A recorded breach does not guarantee a breach for all VOC analytes and should be verified in case the reported breach is a false positive or Vinyl Chloride and Styrene are not key analytes of interest/concern.

Matrix: **WATER**

Evaluation: * = Holding time breach ; ✓ = Within holding time.

Method Container / Client Sample ID(s)	Sample Date	Extraction / Preparation			Analysis		
		Date extracted	Due for extraction	Evaluation	Date analysed	Due for analysis	Evaluation
ED037P: Alkalinity by PC Titrator							
Clear Plastic Bottle - Natural (ED037-P) 092010408001	24-Sep-2020	----	----	----	26-Sep-2020	08-Oct-2020	✓
ED041G: Sulfate (Turbidimetric) as SO4 2- by DA							
Clear Plastic Bottle - Natural (ED041G) 092010408001	24-Sep-2020	----	----	----	25-Sep-2020	22-Oct-2020	✓
ED045G: Chloride by Discrete Analyser							
Clear Plastic Bottle - Natural (ED045G) 092010408001	24-Sep-2020	----	----	----	25-Sep-2020	22-Oct-2020	✓
ED093F: Dissolved Major Cations							
Clear Plastic Bottle - Natural (ED093F) 092010408001, 092010408002	24-Sep-2020	----	----	----	25-Sep-2020	01-Oct-2020	✓
EK055G: Ammonia as N by Discrete Analyser							
Clear Plastic Bottle - Sulfuric Acid (EK055G) 092010408001, 092010408002	24-Sep-2020	----	----	----	26-Sep-2020	22-Oct-2020	✓
EK057G: Nitrite as N by Discrete Analyser							
Clear Plastic Bottle - Natural (EK057G) 092010408001, 092010408002	24-Sep-2020	----	----	----	25-Sep-2020	26-Sep-2020	✓
EK059G: Nitrite plus Nitrate as N (NOx) by Discrete Analyser							
Clear Plastic Bottle - Sulfuric Acid (EK059G) 092010408001, 092010408002	24-Sep-2020	----	----	----	26-Sep-2020	22-Oct-2020	✓

Page : 3 of 5
 Work Order : ES2033696
 Client : ROBERT CARR & ASSOCIATES P/L
 Project : 10408 DUNGOG SHIRE COUNCIL



Matrix: **WATER**

Evaluation: * = Holding time breach ; ✓ = Within holding time.

Method Container / Client Sample ID(s)	Sample Date	Extraction / Preparation			Analysis		
		Date extracted	Due for extraction	Evaluation	Date analysed	Due for analysis	Evaluation
EP005: Total Organic Carbon (TOC)							
Amber TOC Vial - Sulfuric Acid (EP005) 092010408001	24-Sep-2020	----	----	----	25-Sep-2020	22-Oct-2020	✓



Quality Control Parameter Frequency Compliance

The following report summarises the frequency of laboratory QC samples analysed within the analytical lot(s) in which the submitted sample(s) was(were) processed. Actual rate should be greater than or equal to the expected rate. A listing of breaches is provided in the Summary of Outliers.

Matrix: **WATER** Evaluation: * = Quality Control frequency not within specification ; ✓ = Quality Control frequency within specification.

Quality Control Sample Type	Method	Count		Rate (%)			Quality Control Specification
		QC	Reaular	Actual	Expected	Evaluation	
Analytical Methods							
Laboratory Duplicates (DUP)							
Alkalinity by PC Titrator	ED037-P	2	20	10.00	10.00	✓	NEPM 2013 B3 & ALS QC Standard
Ammonia as N by Discrete analyser	EK055G	2	19	10.53	10.00	✓	NEPM 2013 B3 & ALS QC Standard
Chloride by Discrete Analyser	ED045G	2	13	15.38	10.00	✓	NEPM 2013 B3 & ALS QC Standard
Major Cations - Dissolved	ED093F	2	20	10.00	10.00	✓	NEPM 2013 B3 & ALS QC Standard
Nitrite and Nitrate as N (NOx) by Discrete Analyser	EK059G	2	19	10.53	10.00	✓	NEPM 2013 B3 & ALS QC Standard
Nitrite as N by Discrete Analyser	EK057G	1	9	11.11	10.00	✓	NEPM 2013 B3 & ALS QC Standard
Sulfate (Turbidimetric) as SO4 2- by Discrete Analyser	ED041G	2	16	12.50	10.00	✓	NEPM 2013 B3 & ALS QC Standard
Total Organic Carbon	EP005	1	8	12.50	10.00	✓	NEPM 2013 B3 & ALS QC Standard
Laboratory Control Samples (LCS)							
Alkalinity by PC Titrator	ED037-P	2	20	10.00	10.00	✓	NEPM 2013 B3 & ALS QC Standard
Ammonia as N by Discrete analyser	EK055G	1	19	5.26	5.00	✓	NEPM 2013 B3 & ALS QC Standard
Chloride by Discrete Analyser	ED045G	2	13	15.38	10.00	✓	NEPM 2013 B3 & ALS QC Standard
Major Cations - Dissolved	ED093F	1	20	5.00	5.00	✓	NEPM 2013 B3 & ALS QC Standard
Nitrite and Nitrate as N (NOx) by Discrete Analyser	EK059G	1	19	5.26	5.00	✓	NEPM 2013 B3 & ALS QC Standard
Nitrite as N by Discrete Analyser	EK057G	1	9	11.11	5.00	✓	NEPM 2013 B3 & ALS QC Standard
Sulfate (Turbidimetric) as SO4 2- by Discrete Analyser	ED041G	2	16	12.50	10.00	✓	NEPM 2013 B3 & ALS QC Standard
Total Organic Carbon	EP005	1	8	12.50	5.00	✓	NEPM 2013 B3 & ALS QC Standard
Method Blanks (MB)							
Ammonia as N by Discrete analyser	EK055G	1	19	5.26	5.00	✓	NEPM 2013 B3 & ALS QC Standard
Chloride by Discrete Analyser	ED045G	1	13	7.69	5.00	✓	NEPM 2013 B3 & ALS QC Standard
Major Cations - Dissolved	ED093F	1	20	5.00	5.00	✓	NEPM 2013 B3 & ALS QC Standard
Nitrite and Nitrate as N (NOx) by Discrete Analyser	EK059G	1	19	5.26	5.00	✓	NEPM 2013 B3 & ALS QC Standard
Nitrite as N by Discrete Analyser	EK057G	1	9	11.11	5.00	✓	NEPM 2013 B3 & ALS QC Standard
Sulfate (Turbidimetric) as SO4 2- by Discrete Analyser	ED041G	1	16	6.25	5.00	✓	NEPM 2013 B3 & ALS QC Standard
Total Organic Carbon	EP005	1	8	12.50	5.00	✓	NEPM 2013 B3 & ALS QC Standard
Matrix Spikes (MS)							
Ammonia as N by Discrete analyser	EK055G	1	19	5.26	5.00	✓	NEPM 2013 B3 & ALS QC Standard
Chloride by Discrete Analyser	ED045G	1	13	7.69	5.00	✓	NEPM 2013 B3 & ALS QC Standard
Nitrite and Nitrate as N (NOx) by Discrete Analyser	EK059G	1	19	5.26	5.00	✓	NEPM 2013 B3 & ALS QC Standard
Nitrite as N by Discrete Analyser	EK057G	1	9	11.11	5.00	✓	NEPM 2013 B3 & ALS QC Standard
Sulfate (Turbidimetric) as SO4 2- by Discrete Analyser	ED041G	1	16	6.25	5.00	✓	NEPM 2013 B3 & ALS QC Standard
Total Organic Carbon	EP005	1	8	12.50	5.00	✓	NEPM 2013 B3 & ALS QC Standard



Brief Method Summaries

The analytical procedures used by the Environmental Division have been developed from established internationally recognized procedures such as those published by the US EPA, APHA, AS and NEPM. In house developed procedures are employed in the absence of documented standards or by client request. The following report provides brief descriptions of the analytical procedures employed for results reported in the Certificate of Analysis. Sources from which ALS methods have been developed are provided within the Method Descriptions.

Analytical Methods	Method	Matrix	Method Descriptions
Alkalinity by PC Titrator	ED037-P	WATER	In house: Referenced to APHA 2320 B This procedure determines alkalinity by automated measurement (e.g. PC Titrate) on a settled supernatant aliquot of the sample using pH 4.5 for indicating the total alkalinity end-point. This method is compliant with NEPM Schedule B(3)
Sulfate (Turbidimetric) as SO ₄ ²⁻ by Discrete Analyser	ED041G	WATER	In house: Referenced to APHA 4500-SO ₄ . Dissolved sulfate is determined in a 0.45um filtered sample. Sulfate ions are converted to a barium sulfate suspension in an acetic acid medium with barium chloride. Light absorbance of the BaSO ₄ suspension is measured by a photometer and the SO ₄ ²⁻ concentration is determined by comparison of the reading with a standard curve. This method is compliant with NEPM Schedule B(3)
Chloride by Discrete Analyser	ED045G	WATER	In house: Referenced to APHA 4500 Cl - G. The thiocyanate ion is liberated from mercuric thiocyanate through sequestration of mercury by the chloride ion to form non-ionised mercuric chloride. In the presence of ferric ions the liberated thiocyanate forms highly-coloured ferric thiocyanate which is measured at 480 nm APHA seal method 2 017-1-L
Major Cations - Dissolved	ED093F	WATER	In house: Referenced to APHA 3120 and 3125; USEPA SW 846 - 6010 and 6020; Cations are determined by either ICP-AES or ICP-MS techniques. This method is compliant with NEPM Schedule B(3) Sodium Adsorption Ratio is calculated from Ca, Mg and Na which determined by ALS in house method QWI-EN/ED093F. This method is compliant with NEPM Schedule B(3) Hardness parameters are calculated based on APHA 2340 B. This method is compliant with NEPM Schedule B(3)
Ammonia as N by Discrete analyser	EK055G	WATER	In house: Referenced to APHA 4500-NH ₃ G Ammonia is determined by direct colorimetry by Discrete Analyser. This method is compliant with NEPM Schedule B(3)
Nitrite as N by Discrete Analyser	EK057G	WATER	In house: Referenced to APHA 4500-NO ₂ - B. Nitrite is determined by direct colourimetry by Discrete Analyser. This method is compliant with NEPM Schedule B(3)
Nitrate as N by Discrete Analyser	EK058G	WATER	In house: Referenced to APHA 4500-NO ₃ - F. Nitrate is reduced to nitrite by way of a chemical reduction followed by quantification by Discrete Analyser. Nitrite is determined separately by direct colourimetry and result for Nitrate calculated as the difference between the two results. This method is compliant with NEPM Schedule B(3)
Nitrite and Nitrate as N (NO _x) by Discrete Analyser	EK059G	WATER	In house: Referenced to APHA 4500-NO ₃ - F. Combined oxidised Nitrogen (NO ₂ +NO ₃) is determined by Chemical Reduction and direct colourimetry by Discrete Analyser. This method is compliant with NEPM Schedule B(3)
Ionic Balance by PCT DA and Turbi SO ₄ DA	* EN055 - PG	WATER	In house: Referenced to APHA 1030F. This method is compliant with NEPM Schedule B(3)
Total Organic Carbon	EP005	WATER	In house: Referenced to APHA 5310 B, The automated TOC analyzer determines Total and Inorganic Carbon by IR cell. TOC is calculated as the difference. This method is compliant with NEPM Schedule B(3)